

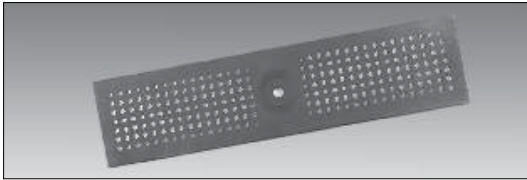
Location: \_\_\_\_\_



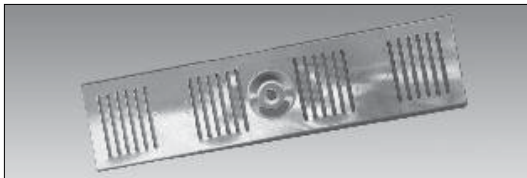
# GRATES

## Load Class C

Heavy duty load rated grates for heavy loads up to 60 ton gross vehicle weight and 10 ton wheel load at slow to moderate speed. Good resistance to impact from pneumatic tire forklifts and tractor trailers. All grates 20" long.



**T1400-RPGG** reinforced perforated galvanized steel grate. 1/4" holes for efficient surface drainage and minimal solids collection. Heel proof and high corrosion resistance.



**T1400-PG-RFS** reinforced slotted Type 304 stainless steel grate for corrosion resistance.



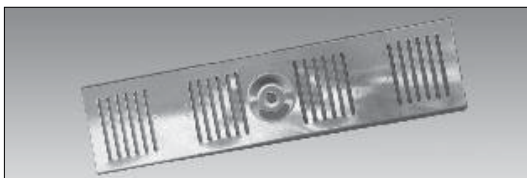
**T1400-PG-RPS** reinforced perforated Type 304 stainless steel grate. 1/4" holes for efficient surface drainage and minimal solids collection. Heel proof and high corrosion resistance.

## Load Class B

Medium duty load rated grates for slow speed pneumatic tire traffic only up to 20 ton gross vehicle weight and up to 5 ton wheel load. All grates 20" long.



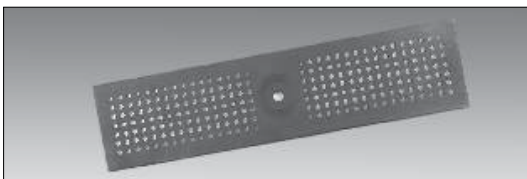
**T1400-PG-PS** fabricated perforated Type 304 stainless steel grate. 1/4" holes for efficient surface drainage and minimal solids collection. Heel proof and high corrosion resistance.



**T1400-PG-FS** fabricated slotted Type 304 stainless steel grate for corrosion resistance.

## Load Class B

Light duty load rated grates for pedestrian, wheelchair and bicycle traffic. All grates 20" long.



**T1400-PGG** fabricated perforated galvanized steel light duty grate. 1/4" holes for efficient surface drainage and minimal solids collection. Heel proof and good corrosion resistance.

CALIFORNIA PROPOSITION 65 WARNING. This product contains chemicals known to the State of California to cause cancer and birth defects or other reproductive harm.

Job Name: \_\_\_\_\_

Page No: \_\_\_\_\_

Section No: \_\_\_\_\_

Contractor: \_\_\_\_\_

Schedule No: \_\_\_\_\_

Purchase Order No: \_\_\_\_\_