

Location:



T1700-PB-3 with Stainless Steel Integral Rail

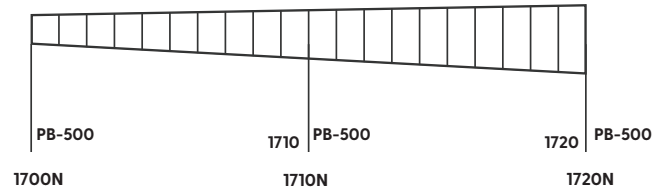
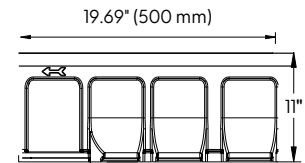
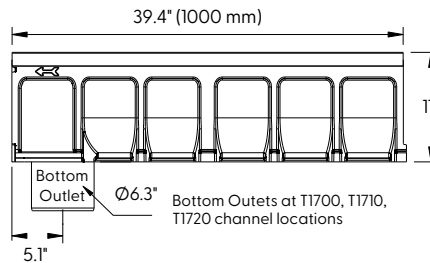
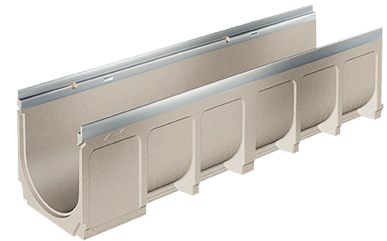
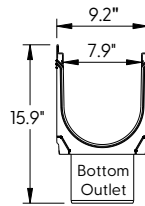


Specification:

MIFAB®'s T1700-PB-3 series channels shall be 39.4" (1000 mm) long with a 8" (200 mm) internal width. Interconnecting channels sections are made from high strength Polymer Concrete and available in sloping and non-sloping (neutral) channels. Each channel comes with a standard stainless steel edge rail which is mechanically embedded in the channel.

Installation devices, plastic end cap/outlet cap, and catch basins are available accessories. System comes complete with 4" preformed bottom outlets at neutral locations. Grates (separate Specification Sheets) are available in in Load Class A-E in a variety of materials. Grates utilize the patented "Clipfix" locking mechanism.

CHANNEL MODEL NUMBER	WEIGHT (LBS.)
T1700N-PB-3	63.21
T1700N-PB-3-BO8	63.21
T700N-PB-3-500	32.36
T1701-PB-3	63.34
T1702-PB-3	64.04
T1703-PB-3	64.74
T1704-PB-3	65.44
T1705-PB-3	66.13
T1706-PB-3	66.83
T1707-PB-3	67.53
T1708-PB-3	68.23
T1709-PB-3	68.93
T1710-PB-3	70.33
T1710-PB-3-BO8	70.33
T1710N-PB-3	70.77
T1710N-PB-3-BO8	71.87
T1710N-PB-3-500	35.94
T1711-PB-3	71.03
T1712-PB-3	71.73
T1713-PB-3	72.42
T1714-PB-3	73.13
T1715-PB-3	73.82
T1716-PB-3	74.52
T1717-PB-3	75.22
T1718-PB-3	75.92
T1719-PB-3	76.62
T1720-PB-3	77.32
T1720-PB-3-BO8	77.32
T1720N-PB-3	79.87
T720N-PB-3-BO8	79.81
T1720N-PB-3-500	36.38

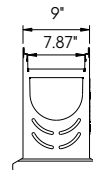


T1700-CB820-3 Stainless Steel Edge Catch Basin

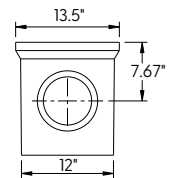
Sediment bucket included



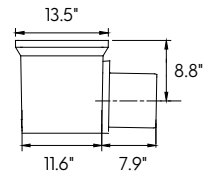
CATCH BASIN TOP ASSEMBLY



CATCH BASIN OPTIONAL EXTENSION



8" OUTLET CATCH BASIN BASE (6" OUTLET ALSO AVAILABLE)



CLIPFIX ADVANTAGE

The MEA polymer concrete channels have been designed for our universal CLIPFIX grate locking mechanism. The system (channel and grate) provides longitudinal shift protection.

Job Name: _____	Page No: _____
Section No: _____	Contractor: _____
Schedule No: _____	Purchase Order No: _____

Revision Date: 11/10/2021

CALIFORNIA PROPOSITION 65 WARNING. This product contains chemicals known to the State of California to cause cancer and birth defects or other reproductive harm.