

WATTS vs. MIFAB

DRAIN BODIES



ONLY ONE BODY NEEDED

One body (A1) with flange and threads at top for floor drains, cleanouts, small area drains and small roof drains. Save 17%.



2 BODIES NEEDED

Two bodies - B3 body with flange and no threads at top (have to use clamp ring and pay 17% more) and B4 body with no flange and threads at top for cleanouts.



STAINLESS STEEL IS SAME PRICE AS NICKEL BRONZE

Heavy duty load rated Type 304 stainless steel floor drain strainers and cleanout tops for same price as light duty nickel bronze.



STAINLESS STEEL IS MORE EXPENSIVE

Standard floor drain strainers and cleanout tops are light duty nickel bronze. Charge a lot more for stainless steel tops.

STRAINER MATERIAL

AREA DRAINS

4 IN 1 DESIGN

Four in One Area Drain Design - Adjustable + non adjustable tops; heavy duty and special duty load rated tops - all in one sku. Save up to 40%

NOT ADJUSTABLE

Have different area drain tops - one that is a fixed (non adjustable top) and another that is an adjustable top - at a higher cost than MIFAB. Also have heavy duty load rated tops and special duty load rated tops - at a higher cost.

FIXTURE CARRIERS



MC-41 FIXTURE CARRIER

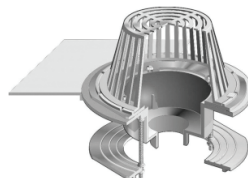
MC-41 concealed arm, universal lavatory serves all sinks / lavatories with one sku. All parts packed in one box.



CA-401 FIXTURE CARRIER

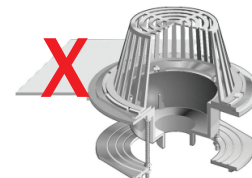
Have different lengths of arms for different sink / lavatory depths - more parts and more confusion.

ROOF DRAINS



SUMP RECEIVER INCLUDED

Roof Drain sump receiver / bearing pan that always ships with the hardware to bolt the A2 body to the sump receiver - eliminating the need for the A2-C3 underdeck clamp. Save 25%



SUMP RECEIVER ADDITIONAL COST

Have this feature with a separate sku that is 25% higher cost.