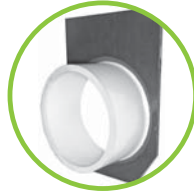


T1800-PBO8 or 10
No Hub Bottom Outlet (8" or 10")



T1800-PEO8 or 10
No Hub End Outlet (8" or 10")

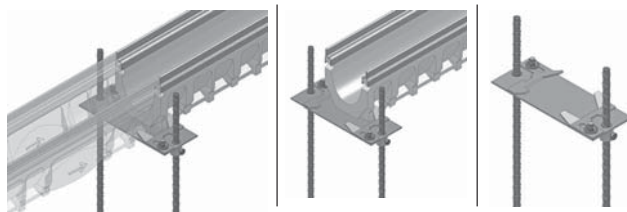


T1800-PEC
Front / End Cap

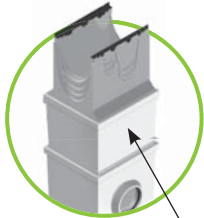


FILCOTEN® T1800
catch basin

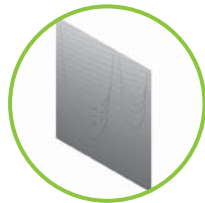
T1800-REB (Rebar Support)



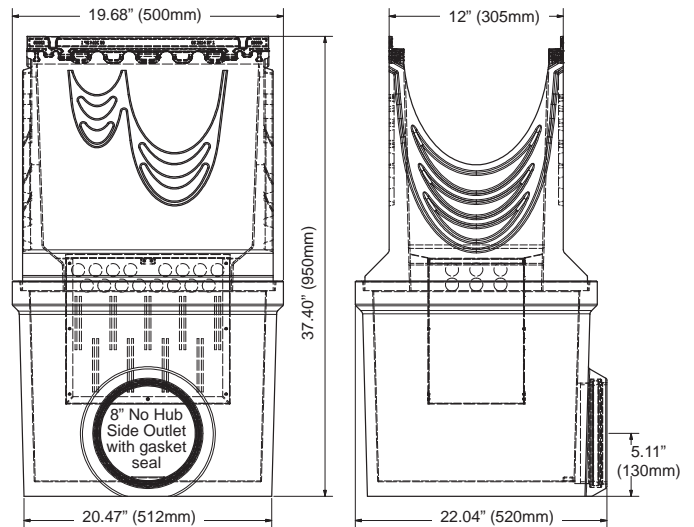
Optional Rebar support (T1800-REB)



T1800-CB-EXT
Optional catch basin extension



T1800-CB-PEC
Optional catch basin end cap



Accessories FILCOTEN® T1800.

Model Number	Description	Material	Weight		List Price, Each, Add
			LBS	kg.	
T1800-CB1220	Catch basin 12" wide with cast iron rails and 8" outlet with seal and connection for T1500/T1700/T1800	FILCOTEN	237.37	124.0	\$1,650.00
T1800-CB-EXT	Catch basin extension unit	FILCOTEN	93.69	42.5	\$1,000.00
T1800-CB-PEC	Catch basin adapter plates for connection with T1500 and T1700	galvanized steel	3.8	1.7	\$75.00
T1800-CB1220-SB	Sediment bucket for catch basin	galvanized steel	7.1	3.2	\$200.00
T1800-PEC	Front/end cap	galvanized steel	3.8	1.7	\$75.00
T1800-PBO8	8" No Hub Bottom Outlet	galvanized steel	3.8	1.7	\$100.00
T1800-PBO10	10" No Hub Bottom Outlet	galvanized steel	3.8	1.7	\$125.00
T1800-PEO8	8" No Hub End Outlet	galvanized steel	3.8	1.7	\$100.00
T1800-PEO10	10" No Hub End Outlet	galvanized steel	3.8	1.7	\$125.00
T1800-REB	Rebar support	fabricated steel	-	-	\$110.00
T1800-PBDS	Bottom Dome Strainer	plastic	0.20	0.1	\$110.00
T1800-CUT	Cutting / per cut - Net Price only-	-	-	1.7	\$495.00 Net Price Only
T1800-PGLVP	Vandal Proof Grate Lockdown	stainless steel	-	-	\$110.00
Tees	Fabricated tee	-	-	-	\$1,100.00
45°	45° body section	-	-	-	\$1,100.00
90°	90° body section	-	-	-	\$1,100.00
T1800-ST	Step Connector	fabricated steel	-	-	\$100.00

*Does not work with ADA compliant gratings



Accessory details including additional images = page 20

Design and dimensions are subject to modification. Prices do not include applicable taxes.

Visit www.mifab.com for the most recent product information.

MIFAB®, Inc., 1321 West 119th Street, Chicago, Illinois 60643-5109, USA
All sales subject to MIFAB's® Terms and Warranties. Please refer to inside back cover.

Toll Free: 1-800-465-2736, Fax: 1-773-341-3049
sales@mifab.com Canada Toll Free: 1-800-387-3880