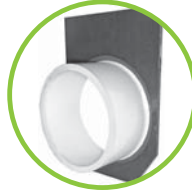


T1700-PBO4, 6 or 8  
No Hub Bottom Outlet (4", 6" or 8")



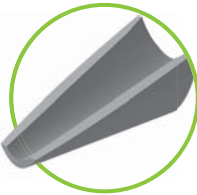
T1700-PEO4, 6 or 8  
No Hub End Outlet (4", 6" or 8")



T1700-PEC  
Front / End Cap



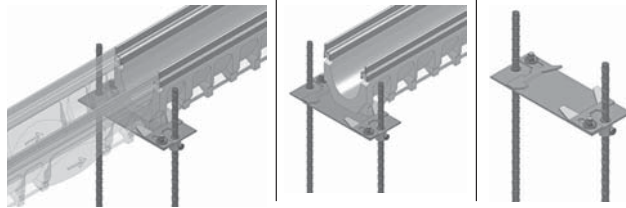
FILCOTEN® T1700 catch basin  
(part #: T1700-CB820)



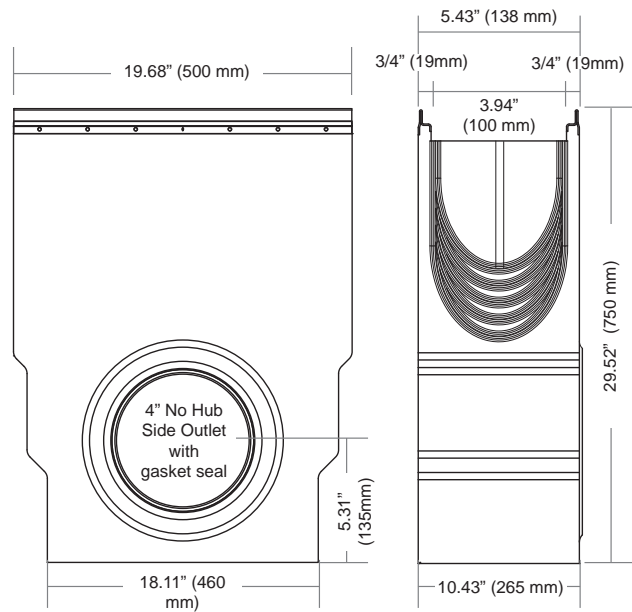
Step connector for connecting bodies  
with different heights.  
T1700-ST



### T1700-REB (Rebar Support)



Optional Rebar support (T1700-REB)



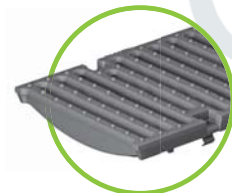
### Gratings FILCOTEN® T1700 with fix self-locking system.

Grate Part Number	Grates	Material	Dimensions in inches	Load class as per EN-standard	Slot / Hole Width	Weight/pc.		Inlet cross-section (Free Area)	List Price, Each, Add	List Price, Per Foot, Add
						LBS	kg.			
T1700-PG-FPC	Perforated	galvanized steel	8.74" x 39.40"	C - Heavy Duty	Ø 1/4" hole (6.0 mm)	28.66	13.00	104.33 sq. inches	\$250.00	\$76.14
T1700-PG-FPC-500	Perforated	galvanized steel	8.74" x 19.68"	C - Heavy Duty	Ø 1/4" hole (6.0 mm)	14.33	6.50	52.16 sq. inches	\$195.00	\$117.00
T1700-PG-FSPC	Perforated	stainless steel	8.74" x 39.40"	C - Heavy Duty	Ø 1/4" hole (6.0 mm)	28.66	13.00	104.33 sq. inches	\$360.00	\$109.64
T1700-PG-FSPC-500	Perforated	stainless steel	8.74" x 19.68"	C - Heavy Duty	Ø 1/4" hole (6.0 mm)	14.33	6.50	52.16 sq. inches	\$275.00	\$165.00
T1700-PG-4	Slotted	ductile iron	8.74" x 19.68"	E- Extra Heavy Duty	0.55" wide x 7.87" slots (14x200 mm)	18.95	8.6	74.78 sq. inches	\$160.00	\$96.00
T1700-PG-4-13	Slotted	Galvanized ductile iron	8.74" x 19.68"	E- Extra Heavy Duty	0.55" wide x 7.87" slots (14x200 mm)	18.95	8.6	74.78 sq. inches	\$300.00	\$180.00

\*Does not work with ADA compliant gratings



ADA Perforated grates  
galvanized or stainless steel  
(FPC or FSPC Grates)



Ductile iron  
slotted grates  
(T1700-PG-4)

**i** Accessory details including additional images = page 20