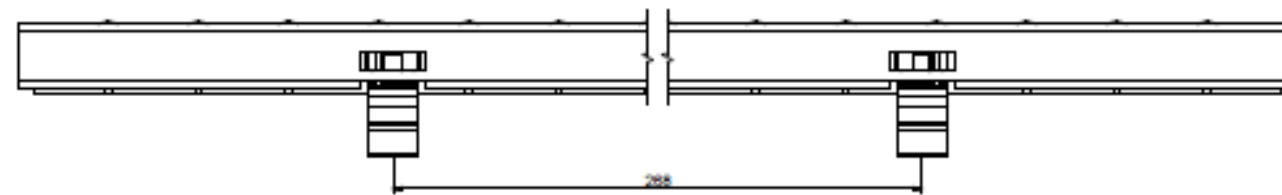


REVISIONS				
ZONE	REV	DESCRIPTION	DATE	APPROVED
ALL	0	RELEASE		

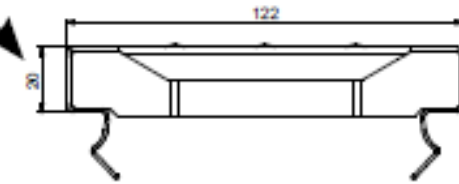


(268mm) 10.55"

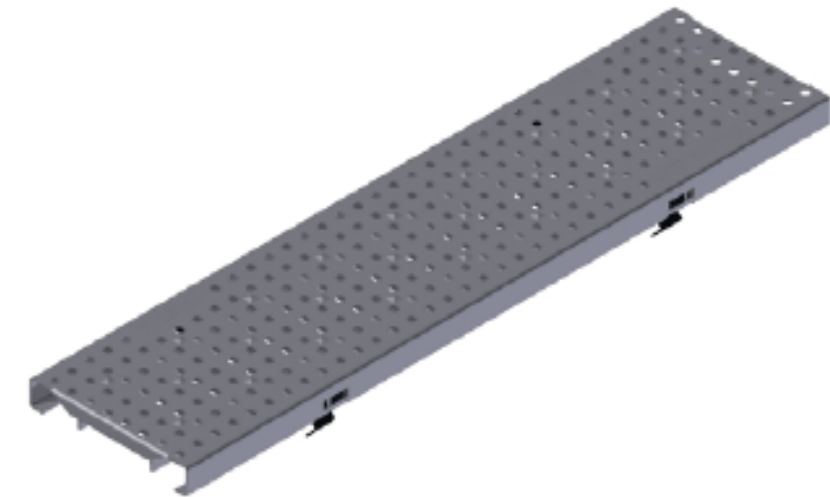
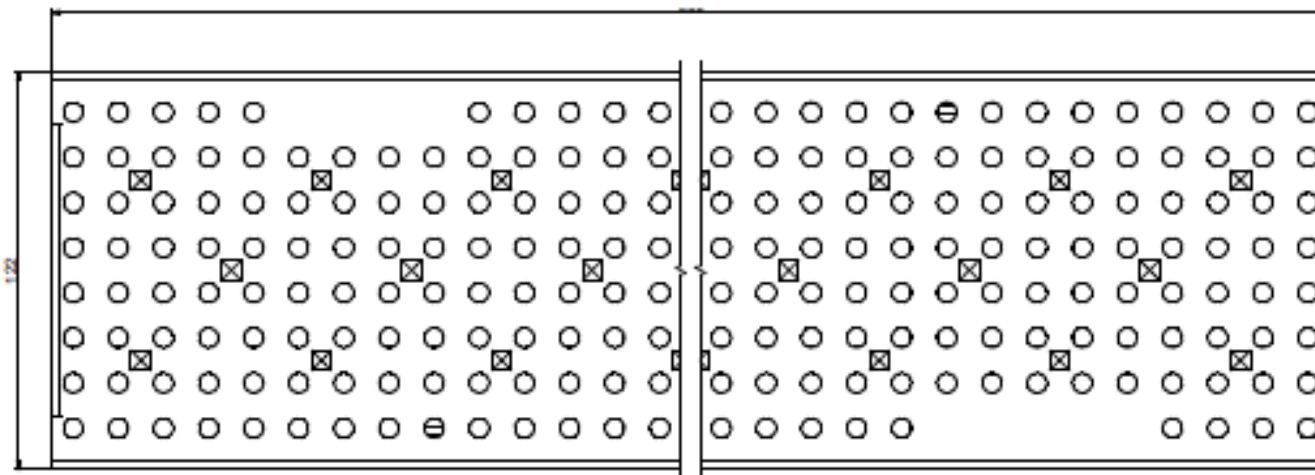
(500mm) 19.68"

(20mm) .79"

(122mm) 4.80"



(122mm) 4.80"



TOLERANCES
(UNLESS OTHERWISE SPECIFIED)

.X ± .03
.XX ± .015
.XXX ± .010
∠ ± 1°

TYP. DRAFT ANGLE = 2°



19.68" LONG PERF. GRATE
HEAVY DUTY (LOAD CLASS C)

DRAWN BY

SIZE
B

COLOR/FINISH

DWG NO.

T1500-PG-FSPC-500

REV

0

APPROVED BY

SCALE

MAT'L STAINLESS STEEL

SHEET 1 of 1