

Load Class E

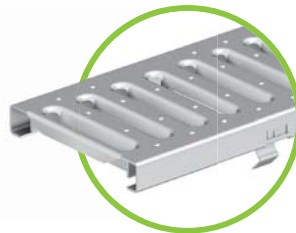
(with Ductile Iron grates)

Gratings FILCOTEN® T1500 with fiX self-locking system.

Grate Model Number	Grates	Material	Dimensions in inches	Load class as per ANSI Standard	Slot-/mesh-width	Weight/pc.		Inlet cross-section (Free Area)	List Price, Each, Add	List Price, Per Foot, Add
						LBS	kg.			
T1500-PG-FSC	Slotted	galvanized steel	4.80" x 39.40"	C- Heavy Duty	0.31" wide x 3.15" slots (8x80 mm)	9.92	4.5	30.7 sq. inches	\$137.50	\$41.88
T1500-PG-FSC-500	Slotted	galvanized steel	4.80x 19.68"	C- Heavy Duty	0.31" wide x 3.15" slots (8x80 mm)	4.85	2.2	15.4 sq. inches	\$115.50	\$70.36
T1500-PG-FSSC	Slotted	stainless steel	4.80" x 39.40"	C- Heavy Duty	0.31" wide x 3.15" slots (8x80 mm)	9.92	4.5	30.7 sq. inches	\$198.00	\$60.30
T1500-PG-FSSC-500	Slotted	stainless steel	4.80x 19.68"	C- Heavy Duty	0.31" wide x 3.15" slots (8x80 mm)	4.85	2.2	15.4 sq. inches	\$154.00	\$93.81
T1500-PG-FPC	Perforated	galvanized steel	4.80" x 39.40"	C- Heavy Duty	Ø 1/4" hole (6.0 mm)	7.27	3.3	29.78 sq. inches	\$148.50	\$45.23
T1500-PG-FPC-500	Perforated	galvanized steel	4.80x 19.68"	C- Heavy Duty	Ø 1/4" hole (6.0 mm)	3.74	1.7	14.11 sq. inches	\$126.50	\$77.06
T1500-PG-FSPC	Perforated	stainless steel	4.80" x 39.40"	C- Heavy Duty	Ø 1/4" hole (6.0 mm)	7.27	3.3	29.78 sq. inches	\$198.00	\$60.30
T1500-PG-FSPC-500	Perforated	stainless steel	4.80x 19.68"	C- Heavy Duty	Ø 1/4" hole (6.0 mm)	3.74	1.7	14.11 sq. inches	\$154.00	\$93.81
T1500-PG-PGC	Perforated	Polyamide	4.80x 19.68"	C- Heavy Duty	Ø 1/4" hole (8.0 mm)	2.42	1.1	22.47 sq. inches	\$75.00	\$45.69
T1500-PG-4-ADA	HEELSAFE bar	ductile iron	4.80x 19.68"	C- Heavy Duty	0.23" by 0.9" (29x6 mm)	7.93	3.6	26.35 sq. inches	\$175.00	\$106.60
T1500-PG-4-13-ADA	HEELSAFE bar	Galvanized ductile iron	4.80x 19.68"	C - Heavy Duty	0.23" by 0.9" (29x6 mm)	7.93	3.6	26.35 sq. inches	\$350.00	\$213.20
T1500-PG-4	Ductile iron slotted	ductile iron	4.80x 19.68"	E- Extra Heavy Duty	0.55" wide x 3.94" slots (14x100 mm)	8.37	3.8	36.00 sq. inches	\$87.00	\$52.20
T1500-PG-4-13	Ductile iron slotted	Galvanized ductile iron	4.80x 19.68"	E- Extra Heavy Duty	0.55" wide x 3.94" slots (14x100 mm)	8.37	3.8	36.00 sq. inches	\$165.00	\$100.51
T1500-PG-FMC	Mesh	galvanized steel	4.80x 39.40"	C- Heavy Duty	.39" wide x 1.18" slots			26.35 sq. inches	\$180.00	\$109.64
T1500-PG-FMC-500	Mesh	galvanized steel	4.80x 19.68"	C- Heavy Duty	.39" wide x 1.18" slots			13.15 sq. inches	\$90.00	\$54.82

PER FOOT PRICE CALCULATION:
Full size bodies: All T1500 bodies (with integral, heavy duty, 4mm thick galvanized steel rail) have a List Price of \$242.00. Divide \$242.00 by 39.40" (length of body) = \$6.142 List per inch.
 \$6.142 x 12" = \$73.70 List per foot. (Body with Integral, heavy duty, 4mm thick galvanized Steel Rail Only)
Full size standard ductile iron grates:
 Divide the above List Price (\$87.00 for the T1500-PG-4 for example) by length of the grate (20") = \$4.35 List per inch. List per inch. \$4.35 x 12" = \$52.20 List per foot. (Grate Only)
 Therefore, a typical T1500 trench drain system is \$125.90 List Price / foot (\$73.70 + \$52.20). This List Price includes the body with integral, heavy duty, 4mm thick galvanized steel rail, ductile iron grate (Load Class E), and four point self locking grate locking system. End caps, outlet connections and all other accessories are extra.

PER FOOT PRICE CALCULATION:
Full size bodies:
 All T1500-3 bodies (with integral, heavy duty, 4mm thick stainless steel rail) have a List Price of \$330.00
 Divide \$330.00 by 39.40" (length of the body) = \$8.3756 List per inch.
 \$8.3756 x 12" = \$100.51 List per foot. (Body with Integral, heavy duty, 4mm thick, Stainless Steel Rail Only)
 One meter long fabricated stainless steel slotted grates: Divide the above List Price (\$198.00 for the T1500-PG-FSSC for example) by length of the grate (39.40") = \$5.025
 List per inch. \$5.025 x 12" = \$60.30 List per foot. (Grate Only)
 Therefore, a typical T1500-3 trench drain system is \$160.81 List Price / foot (\$100.51 + \$60.30). This List Price includes the body with integral, heavy duty, 4mm thick, stainless steel rail, fabricated slotted grate, and four point self locking grate locking system. End caps, outlet connections and all other accessories are extra.



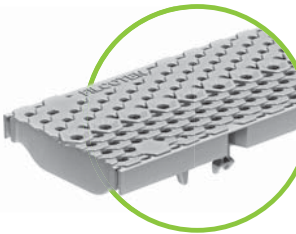
Slotted grates galvanized or stainless steel (FSC or FSSC Grates)



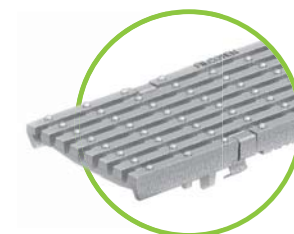
ADA Perforated grates galvanized or stainless steel (FPC or FSPC Grates)



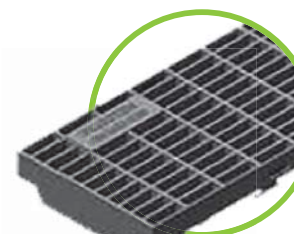
Ductile iron slotted grates (T1500-PG-4)



ADA HEELPROOF COMBee composite grates with anti-slip surface structure (T1500-PG-PGC)



ADA HEELPROOF ductile iron longitudinal slotted grates (T1500-PG-4-ADA)



ADA galvanized steel mesh grates (T1500-PG-FMC)