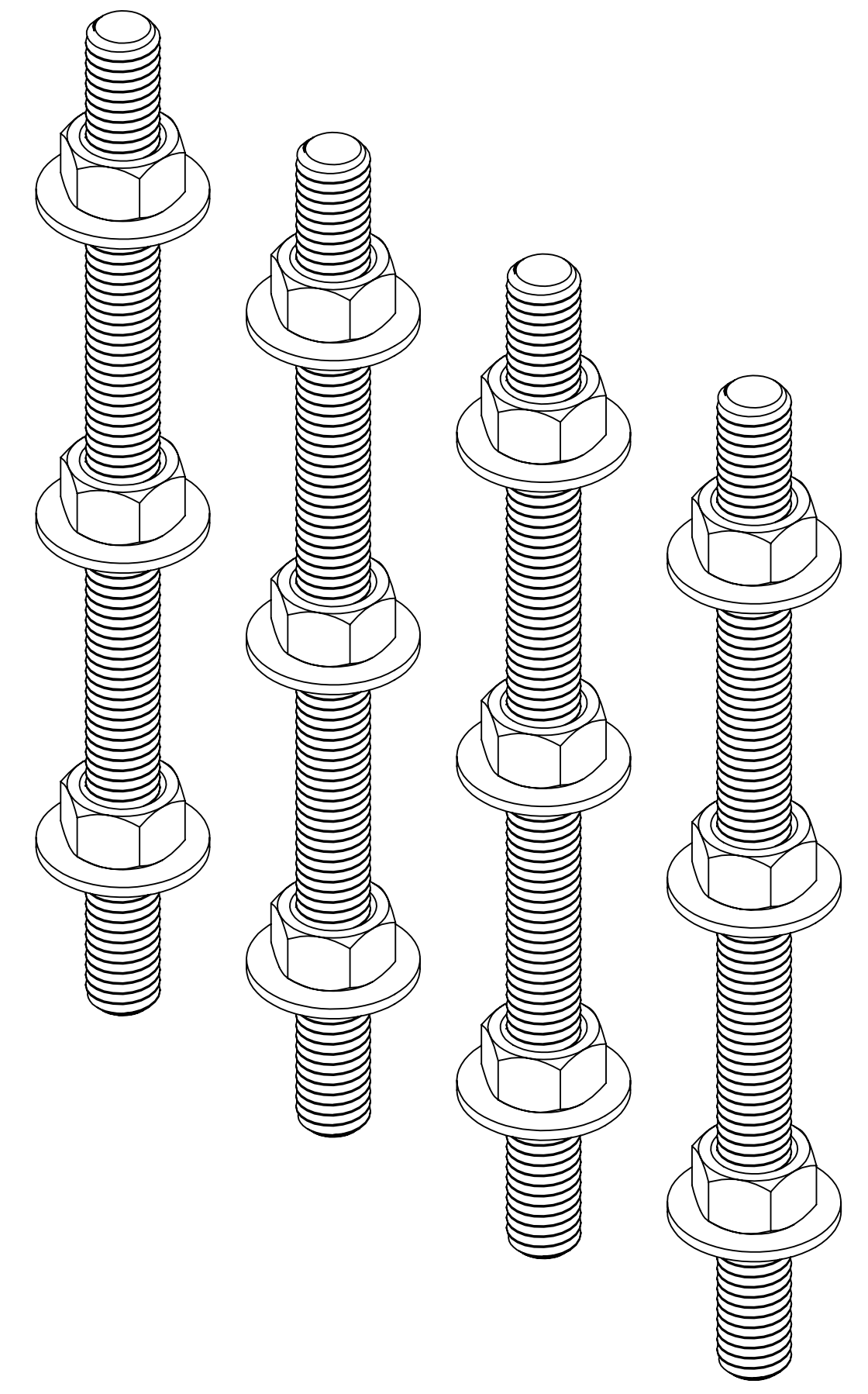
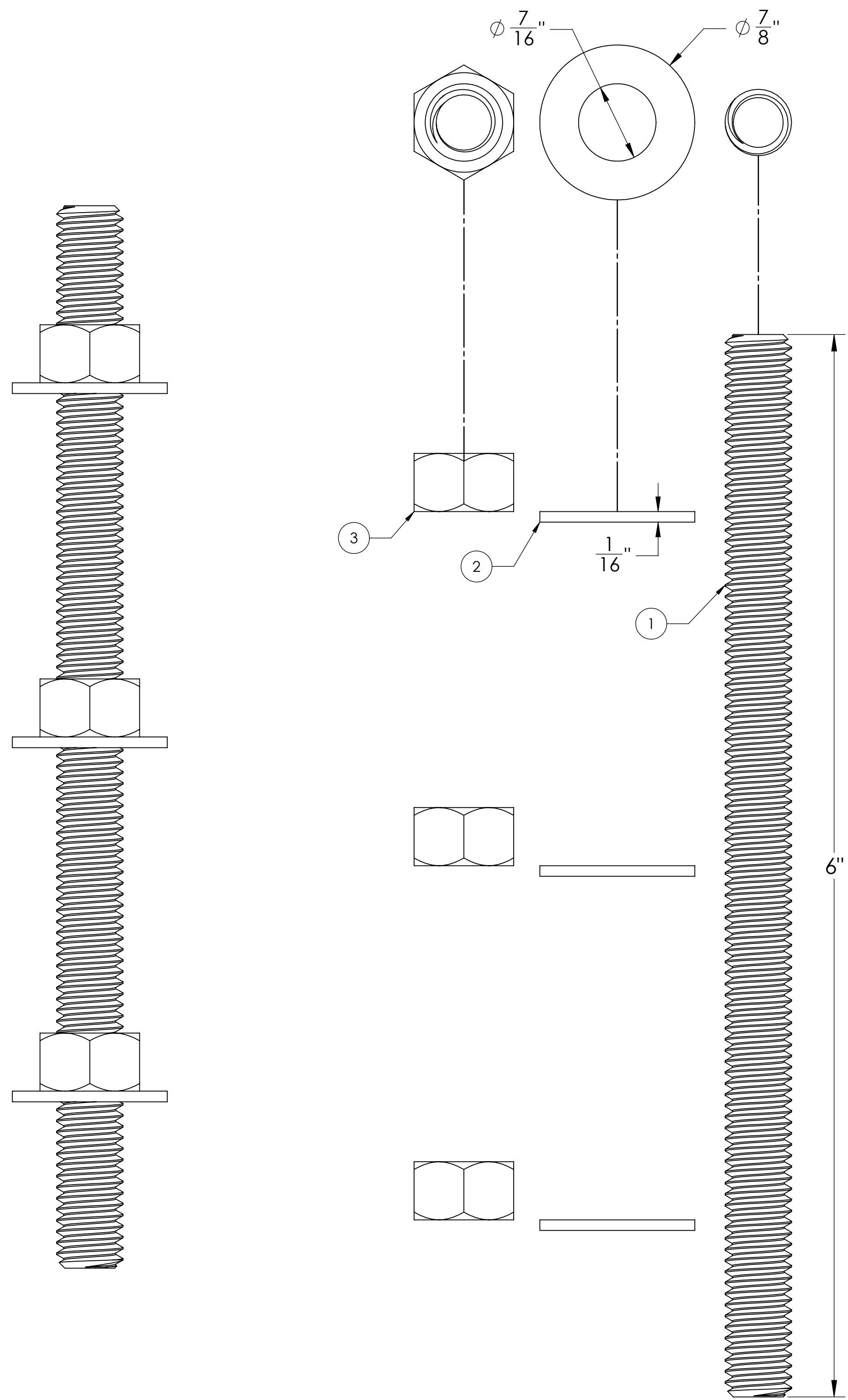


ITEM NO.	DESCRIPTION	QTY.
1	3/8"-16 X 2" ZINC PLT. THRD ROD	4
2	3/8" ZINC PLT. WASHER	12
3	3/8"-16 ZINC PLT. HEX NUT	12

- \*NOTES
- HARDWARE TO BE PLACED IN A CLEAR PLASTIC BAG & LABELED WITH THE PART NUMBER ON IT. (PART# HS-19)
  - SEE OTHER PAGE FOR INSTALLATION LABEL.



PROPRIETARY AND CONFIDENTIAL  
 THE INFORMATION CONTAINED IN THIS DRAWING IS THE SOLE PROPERTY OF MIFAB, INC. ANY REPRODUCTION IN PART OR AS A WHOLE WITHOUT THE WRITTEN PERMISSION OF MIFAB, INC. IS PROHIBITED.

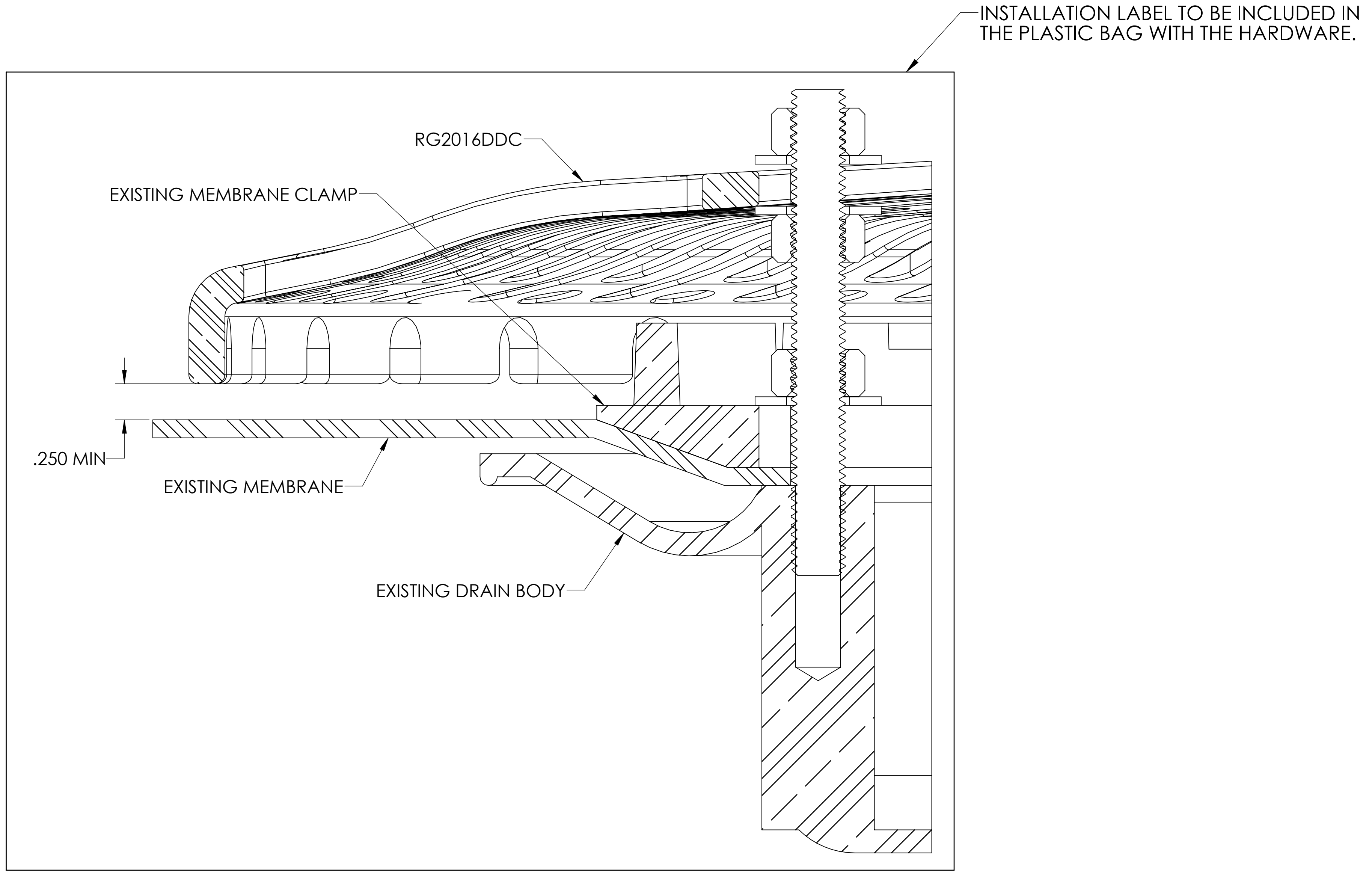
LASER/SHEAR:	UNLESS OTHERWISE SPECIFIED:	NAME	DATE
BRAKE PRESS:	DIMENSIONS ARE IN INCHES	DRAWN	JH 1/26/17
WELDED BY:	TOLERANCES:	CHECKED	XX
CLEAN/PAINT:	FRACTIONAL ±1/16	ENG APPR.	
COMPLETED BY:	ANGULAR: MACH ±1° BEND ±1°	MFG APPR.	
REVIEWED BY:	TWO PLACE DECIMAL ±.015	Q.A.	
NEXT ASSY	THREE PLACE DECIMAL ±.010	QUANTITY:	
USED ON	TYPICAL DRAFT ANGLE 2°	FINISH PART#	XX
APPLICATION	MATERIAL DESCRIPTION	SEE-BOM	
	SEE-BOM	DO NOT SCALE DRAWING	

**MIFAB**

TITLE: ROOF GUARD HARDWARE PACK

SIZE DWG. NO. REV  
**C** HS-19

SCALE: 2:1.5WEIGHT: SHEET 1 OF 2



**PROPRIETARY AND CONFIDENTIAL**  
 THE INFORMATION CONTAINED IN THIS DRAWING IS THE SOLE PROPERTY OF MIFAB, INC. ANY REPRODUCTION IN PART OR AS A WHOLE WITHOUT THE WRITTEN PERMISSION OF MIFAB, INC. IS PROHIBITED.

LASER/SHEAR:		UNLESS OTHERWISE SPECIFIED:		NAME	DATE
BRAKE PRESS:		DIMENSIONS ARE IN INCHES	DRAWN	JH	11/15/16
WELDED BY:		TOLERANCES:	CHECKED		XX
CLEAN/PAINT:		FRACTIONAL ±1/16	ENG APPR.		
COMPLETED BY:		ANGULAR: MACH ±1° BEND ±1°	MFG APPR.		
REVIEWED BY:		TWO PLACE DECIMAL ±.015	Q.A.		
		THREE PLACE DECIMAL ±.010	QUANTITY:		
		TYPICAL DRAFT ANGLE 2°			
		MATERIAL DESCRIPTION			
		SEE-BOM			
		FINISH PART#			
		XX			
		DO NOT SCALE DRAWING			

**MIFAB**  
 TITLE: **RG2016DDC ASSY.**  
 SIZE DWG. NO. REV  
**C** **RG2016DDC, R1810 & A8-BODY**  
 SCALE: 2:1 WEIGHT: SHEET 2 OF 2