

Location: \_\_\_\_\_

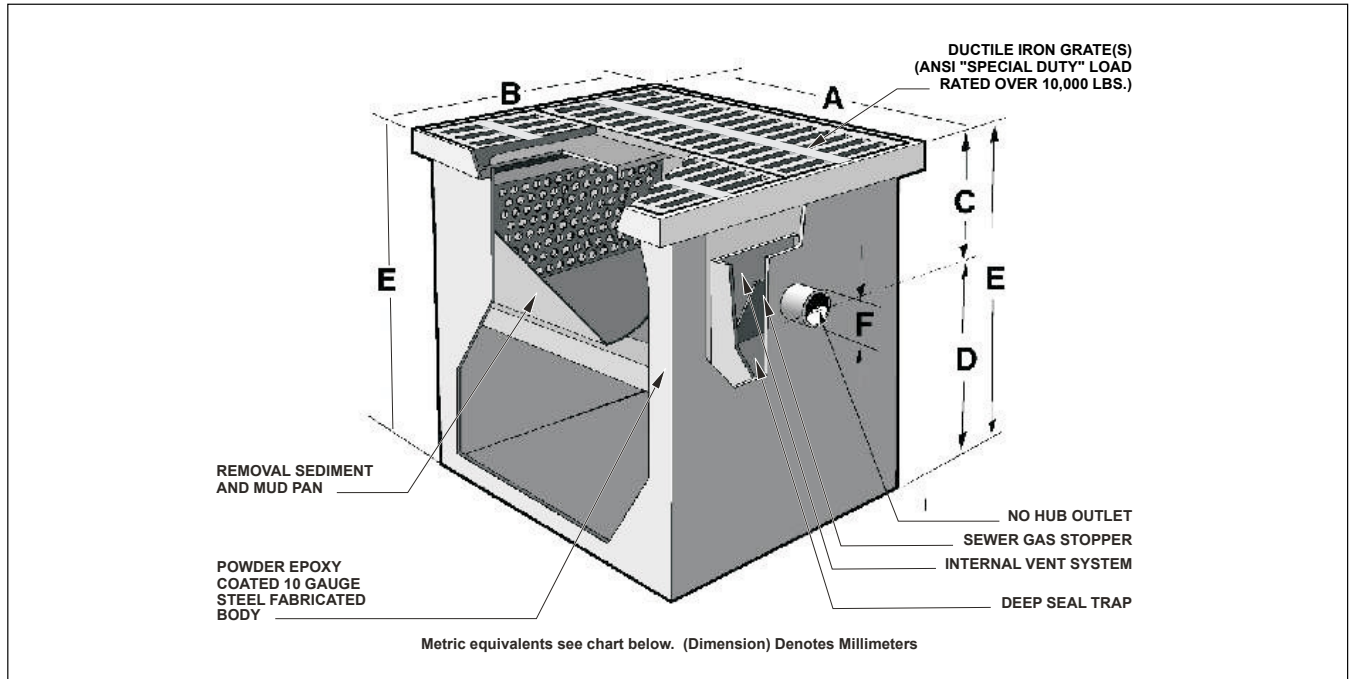


# MI-OS

## OIL / SEDIMENT INTERCEPTOR

**Specification:** MIFAB® Series MI-OS \_\_\_\_ (specify model) sanitary powder epoxy coated inside and outside fabricated 10 gauge steel oil / sediment interceptor with sludge capacity of \_\_\_\_ lbs. (specify). Interceptor complete with ANSI rated "Special Duty" ductile iron grate(s) with load rating over 10,000 lbs., removable sediment bucket and mud pan, deep seal trap with integral sewer gas stopper, internal vent system, cleanout plug and side outlet.

**Function:** Used in service areas to receive wastewater with sediment and oil contaminants through the top grate(s). Sediment bucket and mud pan are designed to capture debris and prevent drain line clogging. Integral sewer gas stopper will prevent harmful gasses from entering via the outlet. Electrostatically applied powder epoxy coating ensures extra long life.



MODEL NO.	SLUDGE CAPACITY LBS.	GRATE FREE AREA SQ. IN.	NO. OF GRATES	A	B	C	D	E	F	LIQUID HOLDING CAP.		SHIPPING WEIGHT (lbs.)	WEIGHT WHEN FILLED WITH WATER (lbs.)
										U.S.G.	CU. FT.		
MI-OS-1	12	49	1	24.375"	12.5"	4.5"	10.5"	15.0"	2"	12	1.6	140	221.00
MI-OS-2	60	131	2	24.375"	24.5"	7.625"	17.625"	25.25"	4"	40	6.13	300	594.00
MI-OS-3	100	262	3	36.625"	24.375"	11"	22"	33"	4"	77	10.25	445	1020.00
MI-OS-4	200	393	4	48.750"	24.375"	11"	22"	33"	4"	103	15.8	560	1334.00
MI-OS-5	300	524	8	48.750"	48.675"	11"	22"	33"	4"	193.33	29.7	650	1600.00

**Note:** Reduce the "A" and "B" dimensions by 1" (25) to determine the actual body length and width dimensions. The lid overhangs the body by 1/2" (13) on all four sides.

SUFFIX	OPTIONAL VARIATIONS
-3	Stainless steel grate (vaneer)
-AP	Anode pack
-BA	Buy American Act compliant product
-C	Extension "C" as required
-FL	Anchor flange

-FLM	Anchor flange and membrane clamp
-OV	2" (51) adjustable draw off valve
-SS	Stainless steel body
-T	F.I.P. female threaded inlet and outlet
-TL	Lid (s) to receive tile or terrazzo
<b>specify</b>	Special size inlet and outlet

CALIFORNIA PROPOSITION 65 WARNING. This product contains chemicals known to the State of California to cause cancer and birth defects or other reproductive harm.

Job Name: \_\_\_\_\_ Page No: \_\_\_\_\_  
 Section No: \_\_\_\_\_ Contractor: \_\_\_\_\_  
 Schedule No: \_\_\_\_\_ Purchase Order No: \_\_\_\_\_