

MC-10

Water Closet Carrier

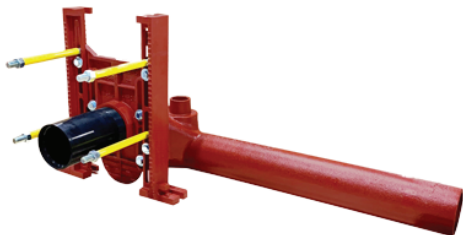
Horizontal, adjustable fixture carrier. Elevates toilet off the floor for easier cleaning. MIFAB closet carriers are shipped with two different hardware packs – one for the rough in and one for the finish trim. This a big advantage vs. others that ship all of the hardware combined in one bag – easy to lose the finish trim at the end of the job when you need it.

Quick Install

Bolts connect legs to the faceplate from the front and all bolts have a built-in washer design

Secure Nipple

Tapered thread nipple inserted into faceplate with o-ring secondary seal. No need to remove the nipple from the faceplate after the water test to cut. Other brands have a flare at the end of their nipple – requiring their nipples to be removed after the water test to cut the finished wall.



Check out the MC-10-27-37 long barrel carrier from MIFAB. It is standard at 37" long (to allow for the 1" thick partitions between the toilets and is also standard with the -27 auxiliary inlet connection to receive lavatory or urinal waste.

Secure

3/8" tappings on the top of both legs to receive all thread rods to secure the flush valve rough in

Universal

Same faceplate used for both siphon jet and blow-out toilets

Accessible

Outside flange of legs removed to provide unencumbered access when using a Roto Hammer to secure the lag bolts into the ground.

Narrow Legs

2 3/4" legs for narrow install.

Built-In Ruler

1/2" increment ruler to get correct height.

Support

1/2" tapping for support strut to accept a cushion clamp for flush valve rough in 4 1/2" on center.

Note: Consult with your MIFAB service rep to order the proper "right" and "left" products.

Pre-Fab Anchor Slot

Slot is 1" from the bottom to connect to 1 1/2" angle iron for pre-fab battery transport.

Rod Protectors

Rod protectors come preassembled to prevent mortar from affecting threads with backup nut already assembled onto rods.

Easy to Use

Faceplate has easy to break off tabs set at common heights

