

Location: _____

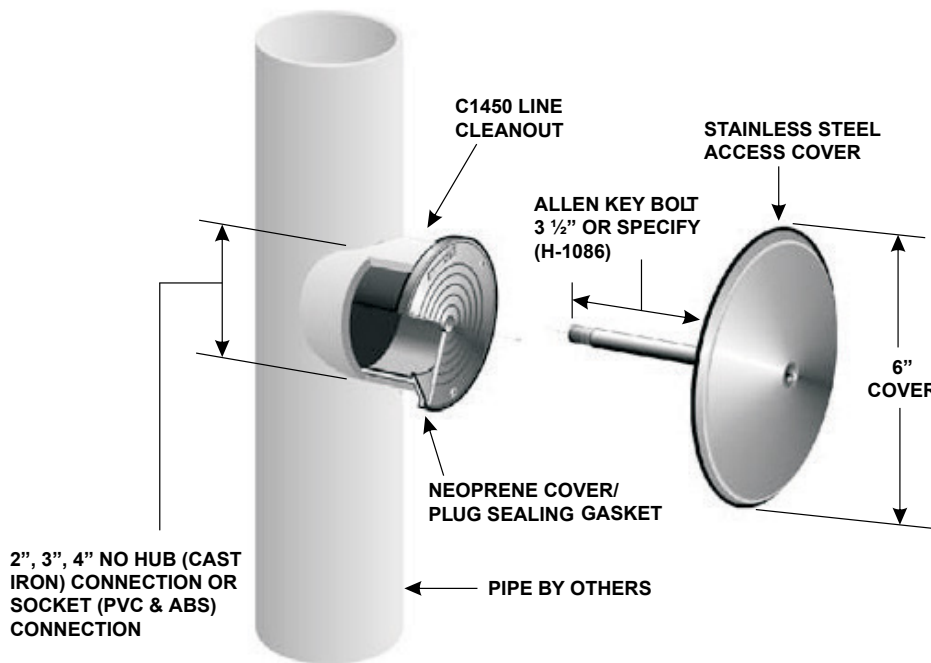


C1450-RD

**LINE CLEANOUT WITH ROUND, STAINLESS
STEEL, SMOOTH ACCESS COVER**

Specification: MIFAB Series C1450-RD (select model number with required plug pipe size) line cleanout plug with blind tapping and 6" round, smooth stainless steel access cover with 3 1/2" anchor screw.

Function: Typically installed on an opening in the finished wall so that it is proud of the wall or ceiling. Cleanout is to provide emergency access to the plumbing lines for removal of blockages. Smooth cover is ideal for wall installations. Plug will fit into pipe opening and is available in either cast iron, PVC, ABS or nickel bronze material to suit the pipe material. Tapping in plug can receive bolt from wall cleanout plate.



C1450-RD Series meets ANSI/ASME floor drain standard A112.6.3-2001

MODEL NUMBER	PIPE SIZE	COVER DIAMETER
C1452-RD6	2" (51)	6" (152)
C1453-RD6	3" (76)	6" (152)
C1454-RD6	4" (102)	6" (152)

Suffix	Description
-4	Ductile iron cover and cast iron body
-6	Security screw (H-1086A)
-30	PVC socket connection body and ductile iron cover
-31	ABS socket connection body and ductile iron cover
-87	Longer screw over 3 1/2", per inch
-95	Client logo
-BA	Minimum 51% material cost made in the USA
-PA	Pennsylvania Steel Act compliant product

CALIFORNIA PROPOSITION 65 WARNING. This product contains chemicals known to the State of California to cause cancer and birth defects or other reproductive harm.

Job Name: _____

Page No: _____

Section No: _____

Contractor: _____

Schedule No: _____

Purchase Order No: _____