

Location: \_\_\_\_\_

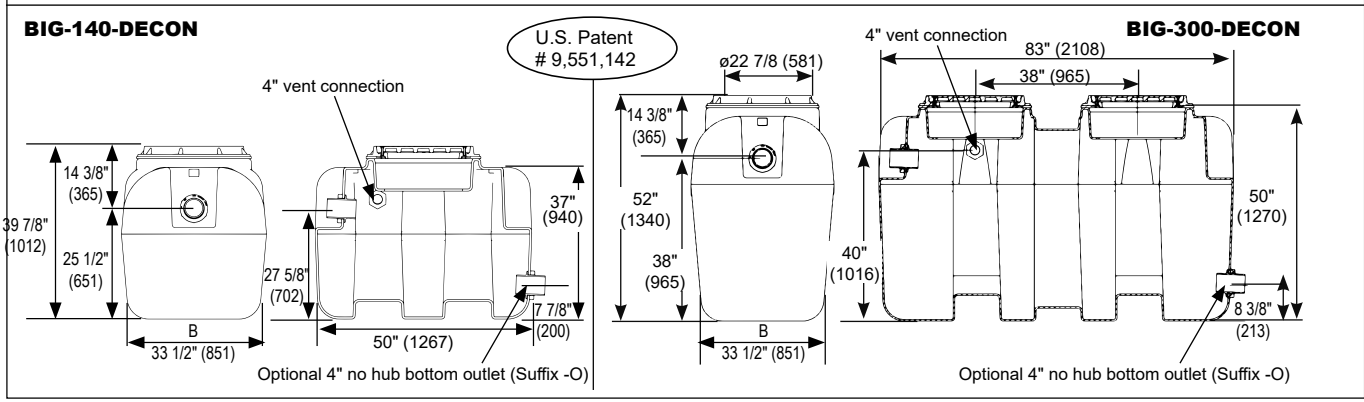
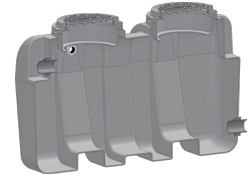
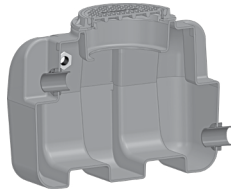


**BIG-DECON**

**Big Max® – Decontamination Tanks – 140 to 300 Gallons Liquid Holding Capacity**

**Specification:** MIFAB® MIFAB BIG-\_\_\_\_ (specify size) - DECON decontamination tank with \_\_\_\_ (specify liquid holding capacity) U.S. gallons of liquid holding capacity has a limited lifetime warranty and is made in the U.S.A. out of seamless, rotationally molded High Density Polyethylene with 3/8" uniform wall thickness. Decontamination tank is designed for above or below ground installation and includes a direct connect lid system, 4" vent connection, and 4" no hub inlet connection. Steel encased composite lids provide a water / gas tight seal and have a minimum of 20,000 LB. load capacity – in accordance with the loading requirements of AASHTO H20. The high density polyethylene material is PE 3135 from Dow 9.39 with a density of 0.939 g/cm3.

**Function:** Used with eyewashes and decontamination showers to capture the liquid wastes that can damage the building's drain, waste and vent system. Public sewer or ground / surface waters are required by Chapter 8 of the Uniform Plumbing Code (U.P.C.) and by the International Plumbing Code (I.P.C.) to be pretreated. This is also required by the AIA and ANSI.



Model No.	Liquid Holding Capacity (Gallons)	B Width	Shipping Weight (Lbs.)
<b>BIG-140-DECON</b>	140	33.50"	150
<b>BIG-300-DECON</b>	300	33.50"	275

Suffix	Description	Model No.
-AK	Anchor kit (set of four) - for BIG-140-DECON.	BIG-750-AK-SET
-AK	Anchor kit (set of four) - for BIG-300-DECON.	BIG-1150-AK-SET
-C	Lid extension (specify "C" dimension req.) - for BIG-140-DECON (This is up to a 44" high extension system)	BIG-EXT-44
-C	Lid extension (specify "C" dimension req.) - for BIG-300-DECON (This is up to a 44" high extension system)	BIG-EXT-44 (2 pcs req.)
-C+	Lid extension from 44" to 72" (specify "C" dimension req.) For BIG-140-DECON. Per inch price.	BIG-EXT-72
-C+	Lid extension from 44" to 72" (specify "C" dimension req.) For BIG-300-DECON. Per inch price.	BIG-EXT-72 (2 pcs req.)
-DI	Ductile Iron lid and collar - for BIG-140-DECON.	BIG-PL4
-DI	Ductile Iron lid and collar - for BIG-300-DECON.	BIG-PL4 (2 pcs req.)
-F6	6" no hub connections (for each piece)	BIG-PF6
-FL-C	Membrane clamp kit	BIG-FLC
-HLA	High level alarm and float switch (to be installed on site)	BIG-HLA
-LHSI	4" no hub inlet on left hand side	BIG-PF4
-LHSO	4" no hub outlet on left hand side	BIG-PF4
-O	Optional 4" outlet connection	BIG-PFO
-POK	Remote pump out kit	BIG-POK
-RHSI	4" no hub inlet on right hand side	BIG-PF4
-RHSO	4" no hub outlet on right hand side	BIG-PF4
-RPO	4" Remote pump outlet connections on top of interceptor - specify location and number required	BIG-RPO
-SP	External Sampling port - inline, high connections	BIG-SP
-SP-L	External Sampling port - inline, low connections	BIG-SP-L
-SP-OF	External Sampling port - offset	BIG-SP-OF
-T	Female threaded connections (for each piece-2 pcs req. per int.)	BIG-PF(*)-FT(*) (*) Specify Conn. Size

CALIFORNIA PROPOSITION 65 WARNING. This product contains chemicals known to the State of California to cause cancer and birth defects or other reproductive harm.

Job Name: \_\_\_\_\_ Page No: \_\_\_\_\_  
 Section No: \_\_\_\_\_ Contractor: \_\_\_\_\_  
 Schedule No: \_\_\_\_\_ Purchase Order No: \_\_\_\_\_