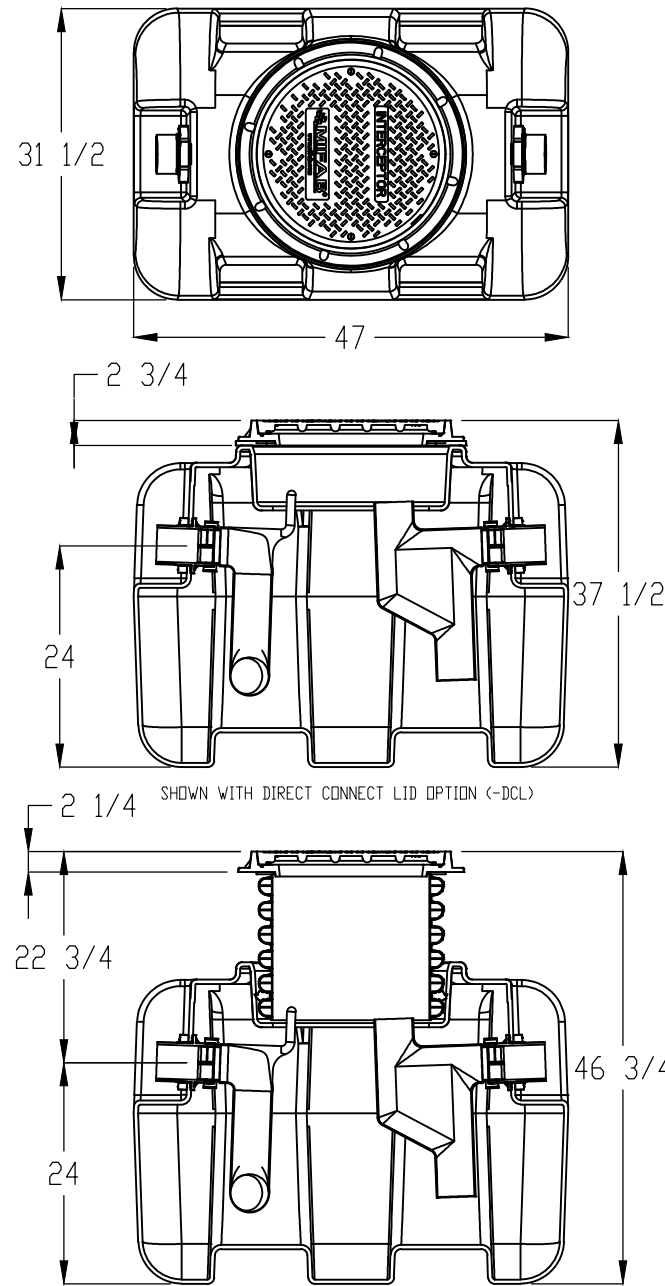


**BIG-750 - 75 GPM HDPE GREASE INT./ 1306 LBS GREASE HOLD CAPACITY
WITH H-20 RATED ACCESS COVERS**

- BIG-750**
1. 4" Inlet and Outlet No-Hub Connections.
2. Liquid Holding Capacity: 140 Gallons
3. H2O Load Rated Access Covers
4. Maximum Operating Temperature: 180° Continuous
- DETAILS**
• Certified by CSA and IAPMO to ASME A112.14.3, CSA B481, and P.D.I. G-101
• Approved installation to ASME A112.14.3 Type A
• Factory installed internal piping.
• 3/8" thick seamless high density polyethylene.
• Full internal access through lid.
• Vent not required for proper operation.
• Designed for above or below ground installations.
• Integral Anti-siphon Air Relief port.

SUFFIX
-AK
-C
-DP
-EP
-F6
-HLA

OPTIONAL VARIATIONS
High water anchor kit
Lid extension(specific)
Dosing pump
Enzyme port
6" No Hub inlet/outlet connection
High level alarm

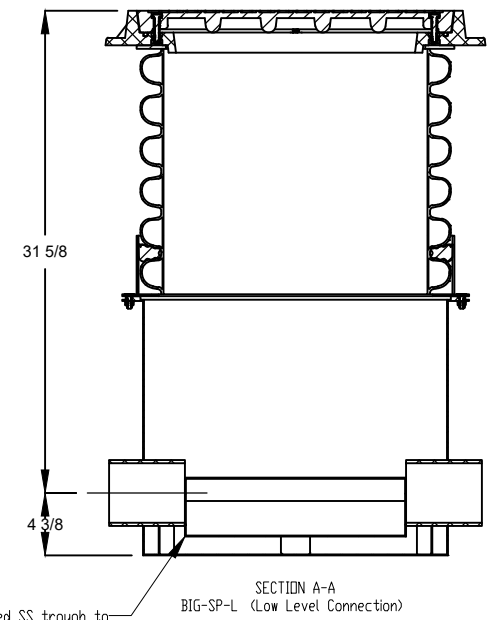
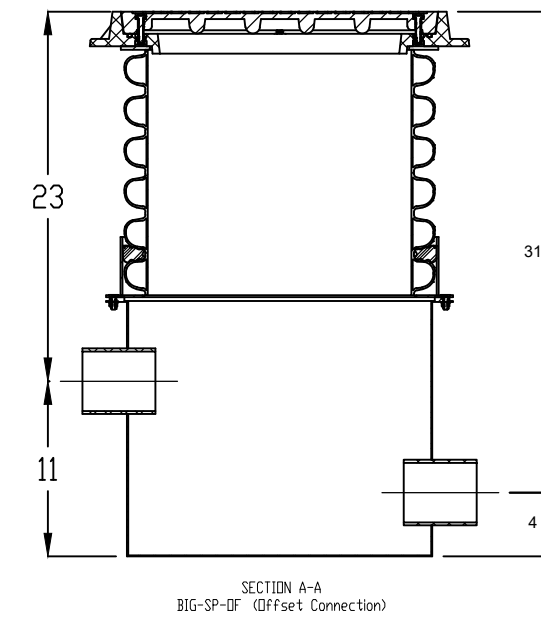
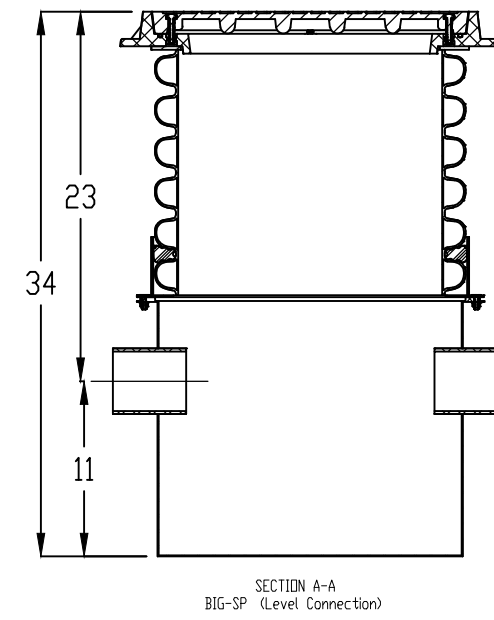
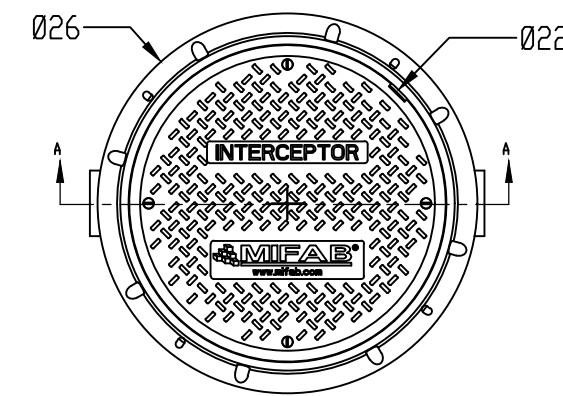


BIG-SP/-L/-OF - BIG MAX HDPE SAMPLING PORT 36"HEIGHT WITH H-20 LID

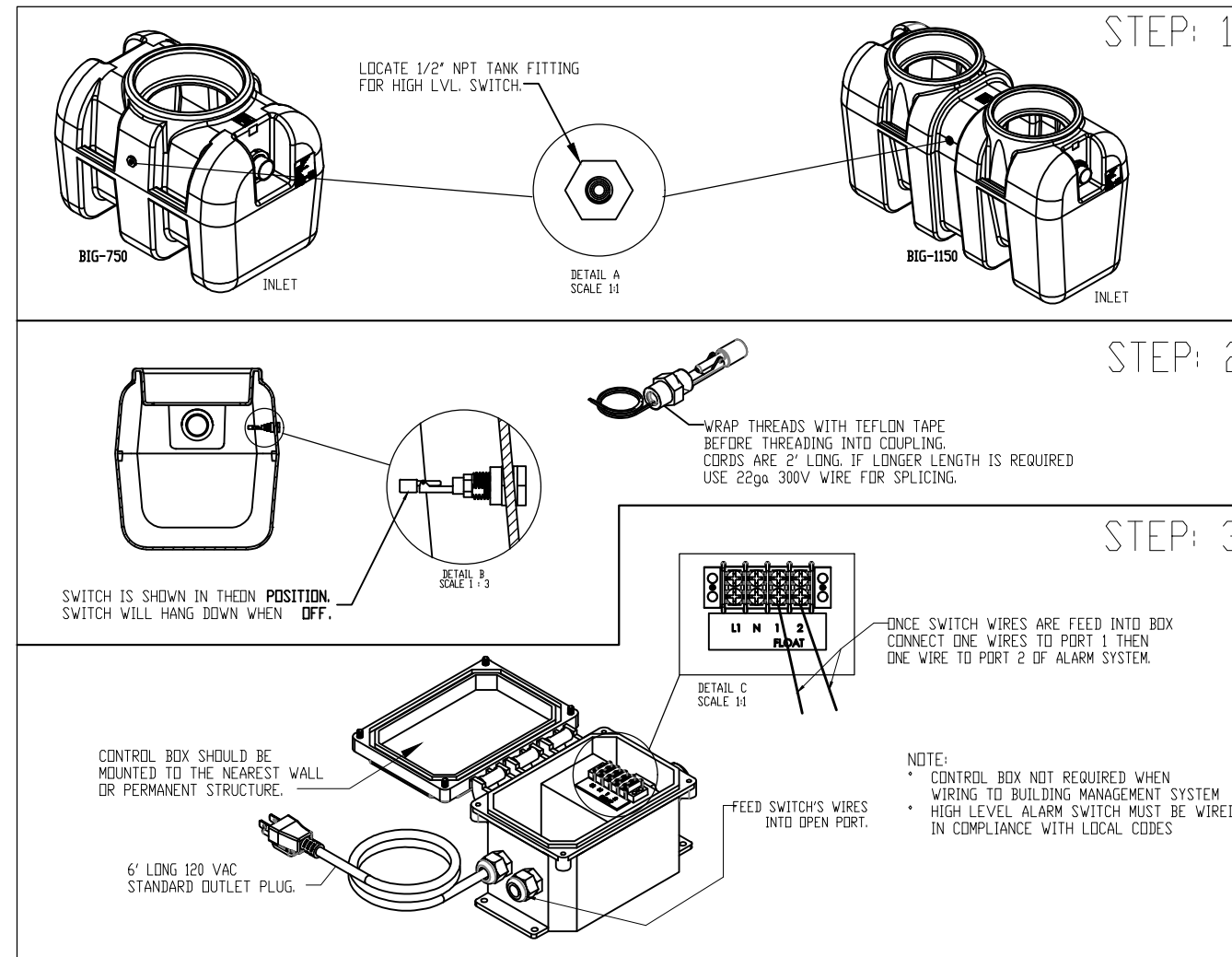
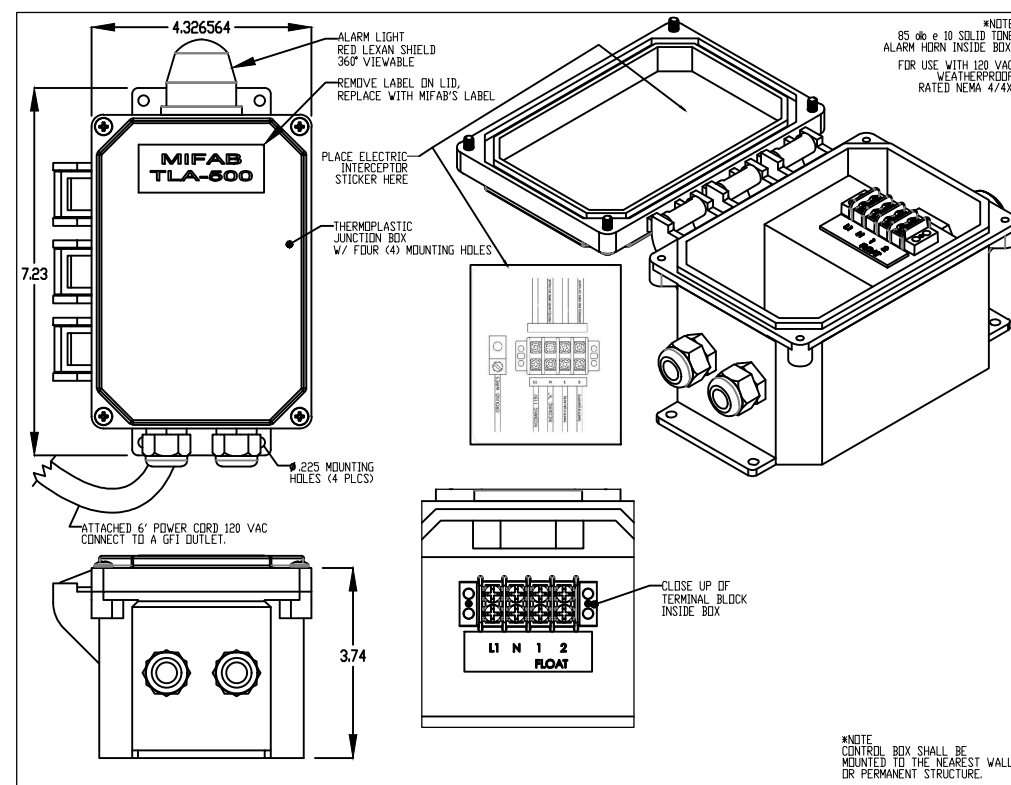
SPECIFICATIONS

- NOTES**
1. 4" no-hub connection for inlet/outlet.
2. Unit weight total-129lbs.
3. Unit supplied with H-20 load rated access cover, 18" corrugated pipe, and sealing gasket.
4. Maximum operating temperature 180° F continuous.
5. Unit for below ground application; -DC for direct connect lid in above ground application.

ENGINEER SPECIFICATION GUIDE:
MIFAB sampling port models: BIG-SP, BIG-SP-OF, and BIG-SP-L are made in the USA of molded polyethylene.



**HIGH LEVEL ALARM OPTION, SUFFIX -HLA
TLA-500 - TANK LEVEL ALARM WITH RED
LIGHT; 85DB @ 10' WITH 6' 120v AC OWER
CORD**

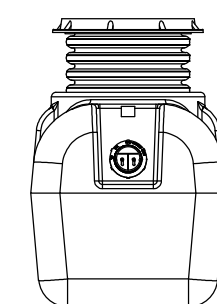
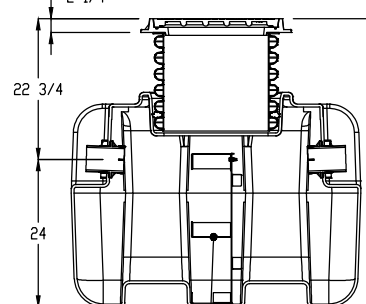
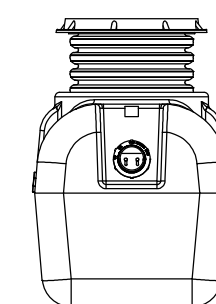
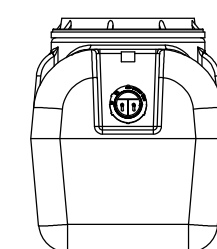
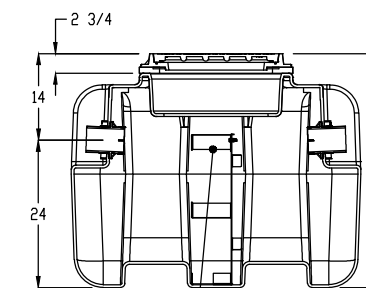
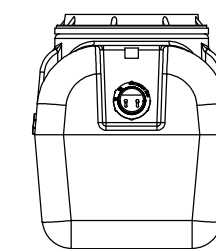
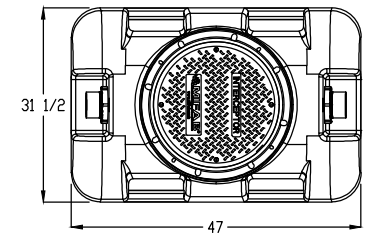


- BIG-140-S - CERNIA Requirement is to have a Solids Interceptor in front of the Grease Interceptor**
1. 4" Inlet and Outlet No-Hub Connections.
2. Solids Holding Capacity: 140 Gallons
3. H2O Load Rated Access Cover
4. Maximum Operating Temperature: 180° Continuous

DETAILS
• 3/8" thick seamless high density polyethylene.
• Full internal access through lid.
• Vent not required for proper operation.
• Designed for above or below ground installation.

SUFFIX
-AK
-C
-DP
-EP
-F6
-HLA

OPTIONAL VARIATIONS
High water anchor kit
Lid extension(specific)
Enzyme port
6" No-Hub inlet/outlet connections
High level alarm



TITLE: 75GPM HDPE GREASE INTERCEPTOR

SIZE DWG. NO. BIG-750
SCALE: 1:11 **WEIGHT:** **SHEET 1 OF 1**

PROPRIETARY AND CONFIDENTIAL
THE INFORMATION CONTAINED IN THIS DRAWING IS THE SOLE PROPERTY OF MIFAB, INC. ANY REPRODUCTION IN PART OR AS A WHOLE WITHOUT THE WRITTEN PERMISSION OF MIFAB, INC. IS PROHIBITED.