



MI-HEL

**HELICOPTER PORT
FUEL INTERCEPTOR**

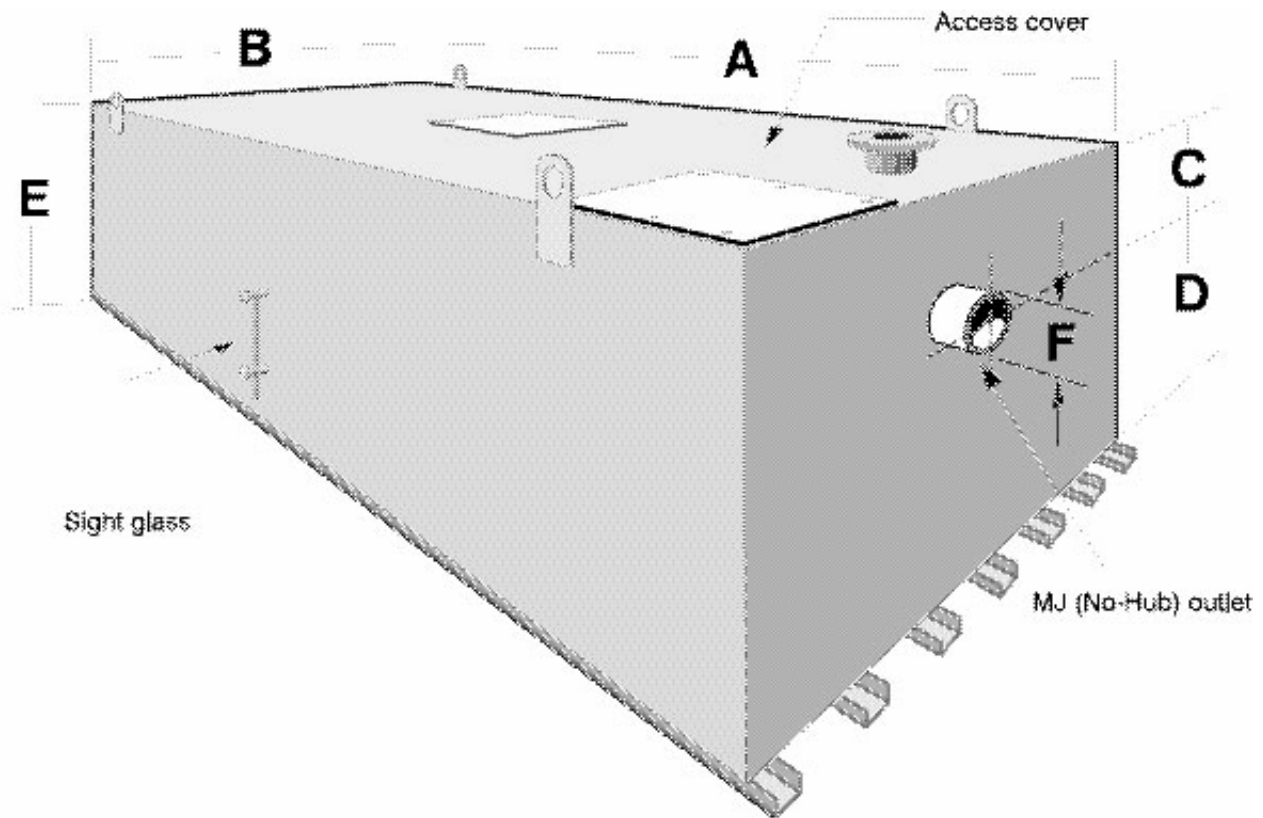
Internet address: www.mifab.com

Toll Free: 1-800-465-2736

Canada Toll Free: 1-800-387-3880

SPECIFICATION: MIFAB® Series MI-HEL _____ helicopter port fuel interceptor constructed from high-strength 1/4" (6) plate steel, ASTM-A242, outlet vent connection, internal vent connection, gasketed access covers fastened with stainless steel bolts, 2" (50) fuel drain connection, 1" (25) fresh water supply connection with gate valve, back flow preventer, automatic water level float valve, external sight glass water level indicator with drain cocks, 2" (50) interceptor drain plugs, channel support rails and body corner lifting lugs. Interceptor shall be coated with Neutra-Rust® on the inside and a Class A rated and approved fire retardant intumescent coating.

Plumbing and Drainage
Mechanical Section



Metric equivalents see chart below. (Dimension) Denotes Millimetres

| MODEL NO. | WATER SEAL GALLS. | CU. FT. | FUEL RETENTION CAPACITY GALLONS | A | B | C | D | E | F |
|-----------|-------------------|---------|---------------------------------|-------------|------------|-----------|-----------|------------|----------|
| MI-HEL-1 | 135 | 18.00 | 35 | 90" (2250) | 36" (900) | 12" (300) | 36" (900) | 48" (1200) | 6" (150) |
| MI-HEL-2 | 175 | 23.30 | 65 | 126" (3150) | 48" (1200) | 12" (300) | 36" (900) | 48" (1200) | 6" (150) |
| MI-HEL-3 | 200 | 26.60 | 90 | 132" (3300) | 63" (1575) | 12" (300) | 36" (900) | 48" (1200) | 6" (150) |
| MI-HEL-4 | 300 | 40.00 | 195 | 192" (4800) | 92" (2300) | 12" (300) | 36" (900) | 48" (1200) | 6" (150) |
| MI-HEL-5 | 350 | 46.60 | 220 | 213" (5325) | 96" (2400) | 12" (300) | 36" (900) | 48" (1200) | 6" (150) |
| MI-HEL-6 | 400 | 52.48 | 250 | 240" (6000) | 96" (2400) | 12" (300) | 36" (900) | 48" (1200) | 6" (150) |