

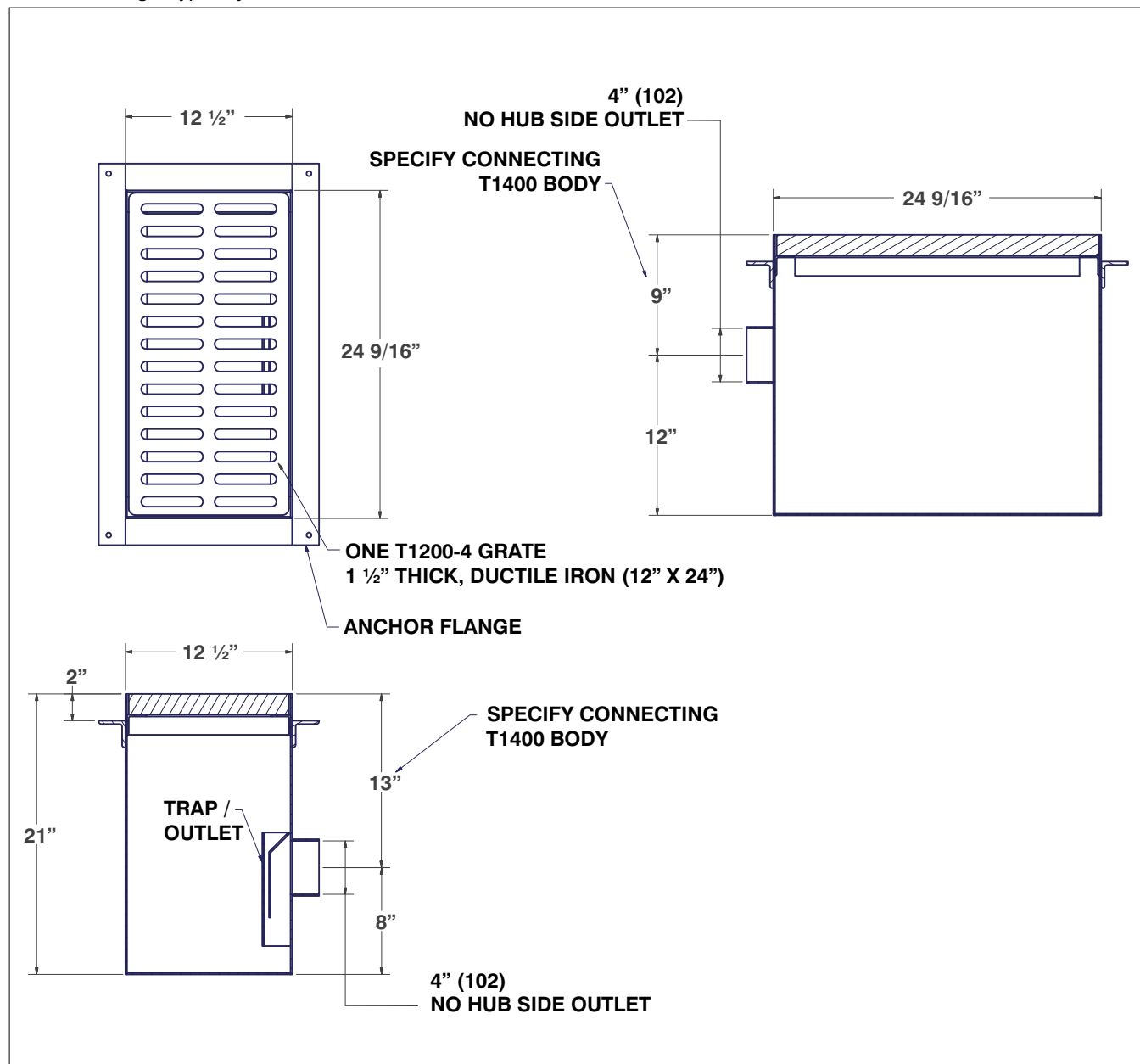


T1400-CB1224

12" x 24" CATCH BASIN

Specification: MIFAB® Series T1400-CB1224, 12 1/2" wide x 24 9/16" long x 21" deep fabricated steel catch basin. Powder epoxy coated with integral top frame, anchor flange. Standard with ANSI rated "Heavy Duty" lacquered ductile iron grate with a safe load of over 10,000 lbs.

Function: Used in airports, car washes, malls and plazas, golf courses, factories and any other facilities that require large areas of surface drainage. Typically installed in the middle of a T1400 section of trench drain to receive debris and redirect waste water.



OPTIONAL VARIATIONS: SUFFIX

- ☐ Extra heavy duty ductile iron grate (Standard) -DG
- ☐ Stainless steel sediment bucket (Type 304) -SB1224-3
- ☐ Galvanized steel sediment bucket -SB1224-13
- ☐ Stainless steel frame assembly -PFV-1224-3

Job Name: _____

Page No: _____

Section No: _____

Contractor: _____

Schedule No: _____

Purchase Order No: _____

MIFAB reserves the right to make changes in material and design without formal notice and obligation.

www.mifab.com