

Location: _____

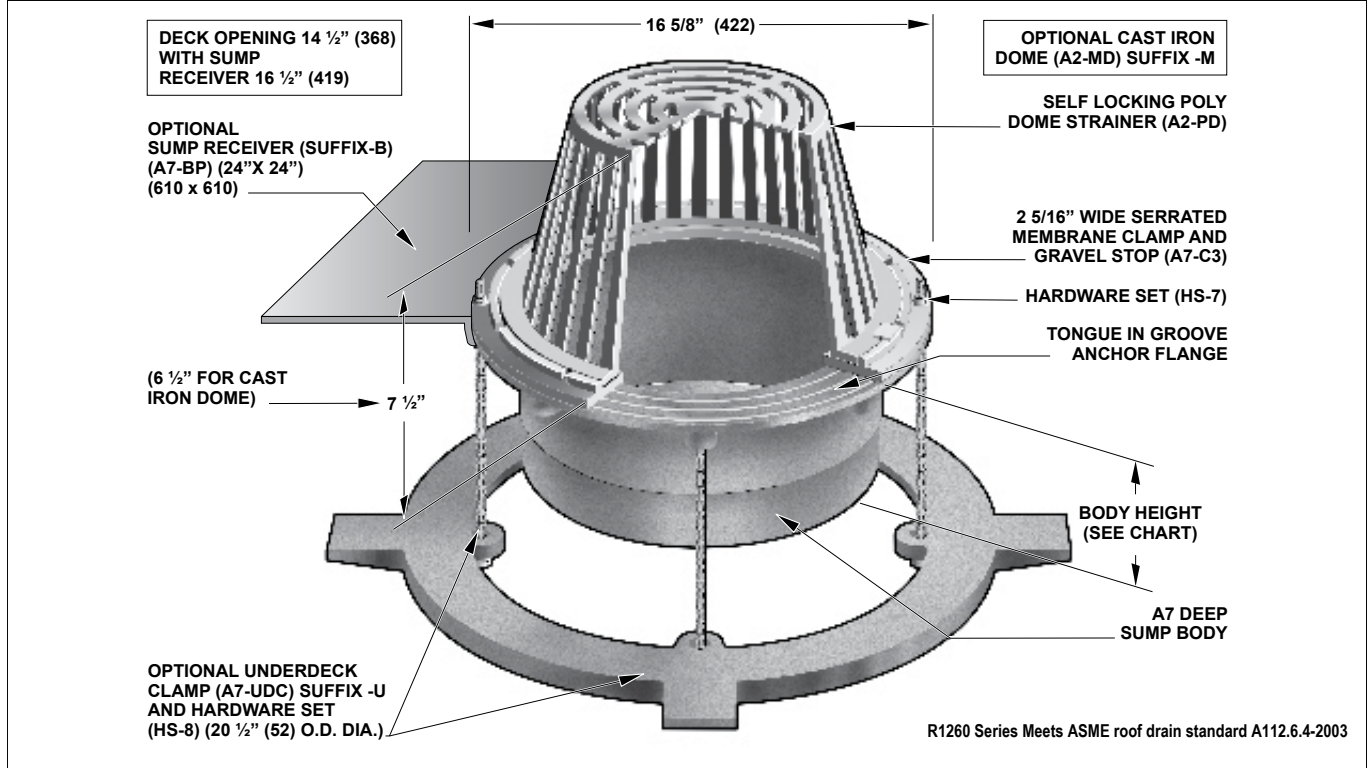


R1260

**EXTRA LARGE SUMP
HIGH FLOW ROOF DRAIN**

Specification: MIFAB® Series R1250 lacquered cast iron extra deep sump high flow roof drain with 15" diameter anchor flange, large cast iron waterproofing membrane clamp ring with integral gravel stop, and standard self-locking polyethylene dome strainer with a free area of 125 square inches.

Function: Used in any type of flat roofs. Extra deep sump body and large free area dome provides for high flow drainage of rainwater and prevents debris from entering the drain line. Extra wide anchor flange and membrane clamp with tongue in groove design provides for secure grip of membrane and roof flashing materials.



PIPE SIZE	BODY HEIGHT	
	NO HUB (STANDARD)	INSIDE CAULK (X)
10" (254)	5 5/8" (143)	5 5/8" (143)
12" (305)	5 5/8" (143)	-

SUFFIX	OPTIONAL VARIATIONS
-6	Vandal proof dome (metal dome only)
-11	Acid resistant epoxy coating
-12	Galvanized metal dome
-12A	Galvanized body and membrane clamp
-12B	Galvanized metal dome and membrane clamp
-13	Galvanized body, membrane clamp and dome
-81	Rough bronze dome
-83	Stainless steel mesh screen over dome
(Standard)	No hub outlet
-B	Sump receiver
-BA	Buy America Act compliant product
-C	Secondary clamp
-E	Adjustable extension
-EG	Galvanized Adjustable extension
-G	Stainless steel ballast guard
-JC	S.S. ballast guard with secondary clamp
-M	Metal dome

SUFFIX	OPTIONAL VARIATIONS
-M-80	Low profile silhouette aluminum dome
P	Push on outlet
-PA	Pennsylvania Steel Act compliant product
-R	2" external water dam
-U	Underdeck clamp
-U3	Underdeck clamp with cutaway side
-V	Fixed Static Extension 2", 3", 4"
-W	Adjustable water dam
-W-1	Water proofing flange
-W1	Water proofing flange (A8-W-1)
-W2	2" internal water dam
-W3	3" internal water dam
-W4	4" internal water dam
-W6	6" diameter adjustable water dam
X	Inside caulk outlet (2",3",4")
-Z	Extended wide elastomeric flange

CALIFORNIA PROPOSITION 65 WARNING. This product contains chemicals known to the State of California to cause cancer and birth defects or other reproductive harm.

Job Name: _____ Page No: _____
 Section No: _____ Contractor: _____
 Schedule No: _____ Purchase Order No: _____