

Location: \_\_\_\_\_

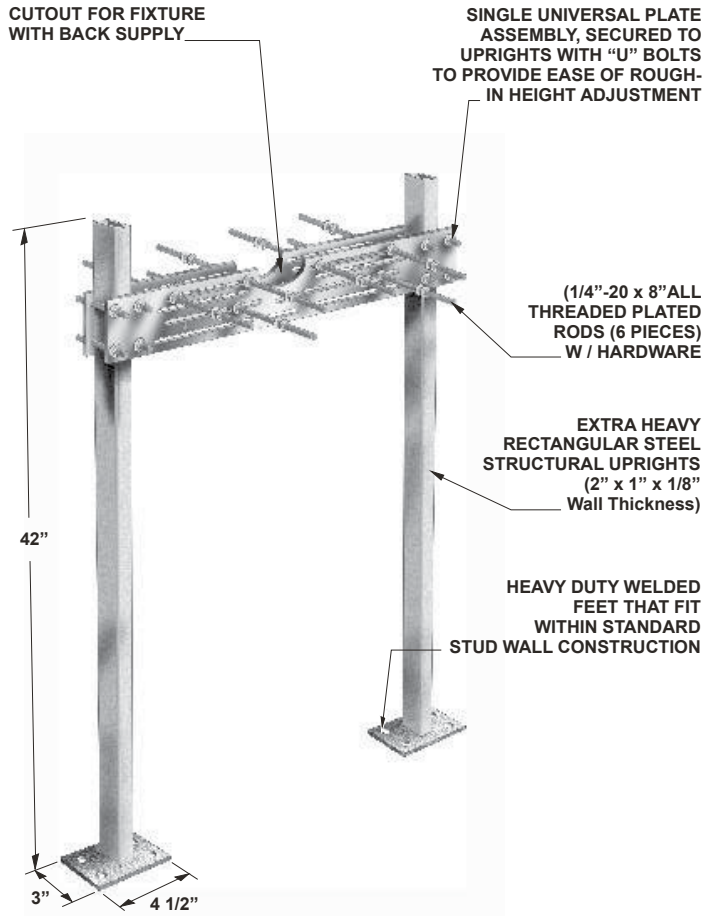


**MC-31D**

**BACK TO BACK SINGLE HANGER PLATE CARRIER WITH TWO UPRIGHTS**

**Specification:** MIFAB® Series MC-31D back to back, lavatory hanger plate carrier with universal, adjustable, top support plates. Complete with lacquered 2" x 1" x 1/8" thick structural steel uprights with 3" x 4 1/2" welded steel feet and mounting hardware.

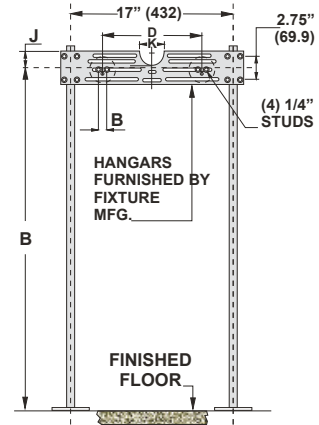
**Function:** Used to support back to back wall-hung fixtures such as urinals and water coolers that are independent of the wall. Designed for use in conjunction with the fixture hanger plate supplied by the fixture manufacturer.



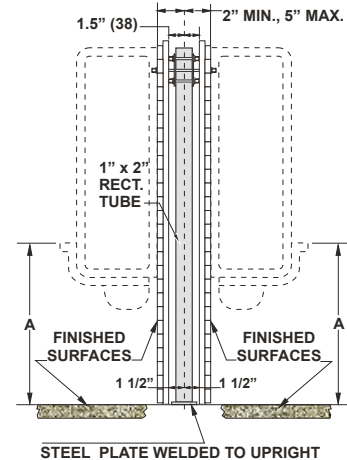
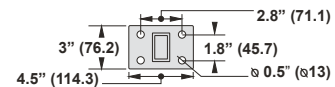
MC-31D Series Meets ANSI/ASME fixture carrier standard A112.6.1M-97

**NOTE: FOOT SUPPORTS SHOULD BE SECURELY ANCHORED TO FLOOR WITH 1/2" (13) BOLTS AND ANCHORS BY OTHERS.**

**Note:** See the various fixture dimensional rough-in guides on the [www.mifab.com](http://www.mifab.com) website.



**BASE DETAIL**



SUFFIX	OPTIONAL VARIATIONS
-A	Stud length over 8" (specify)
-B	Floor to ceiling uprights
-BA	Buy American Act compliant product
-HDH	Heavy duty hanger
-PA	Pennsylvania Steel Act compliant product
-PFAB	Prefabricated carrier
-20	Flush valve support

CALIFORNIA PROPOSITION 65 WARNING. This product contains chemicals known to the State of California to cause cancer and birth defects or other reproductive harm.

Job Name: \_\_\_\_\_ Page No: \_\_\_\_\_  
 Section No: \_\_\_\_\_ Contractor: \_\_\_\_\_  
 Schedule No: \_\_\_\_\_ Purchase Order No: \_\_\_\_\_